



West Central *Electric News*

A Touchstone Energy® Cooperative



West Central Electric Cooperative, Inc. ~ Serving our members' needs since 1939

Practical pointers for making sure you stay safe

West Central Electric Cooperative is joining with the Electrical Safety Foundation International to raise awareness about potential home electrical hazards and the importance of electrical safety. This year's campaign, "Back to the Basics," challenges consumers to make home electrical safety assessments a priority.

According to the Consumer Electronics Association, the average home today has a minimum of three televisions, two DVD players, at least one digital camera, one desktop computer, and two cell phones.

Modern homes run on electricity, but if you don't properly maintain your electrical products they can create haz-

ards. The good news is that eliminating electrical hazards from your home doesn't have to be difficult or expensive.

Many homes and their electrical systems were built before most modern-day home electronics and appliances were even invented. Today's increased demand for energy can overburden an

older home's electrical system.

Consider the following tips to help identify and eliminate electrical hazards to protect yourself, your family, and your home:

- Make sure entertainment centers and computer equipment have plenty of space around them for ventilation.

Continued on page 4



A LOOK BACK...It wasn't too many years ago that annual meetings were held under the "big tent" in the park. Meetings under the big tent were tradition for many years, however that practice came to a halt when a 1978 storm nearly blew the tent away and caused the annual meeting to adjourn until August of that year. Come see this photo along with many others at our annual meeting Aug. 1, 2014. In honor of the cooperative's 75th anniversary, we will host a historic photo display depicting moments and events in the history of your cooperative. You won't want to miss it!

Johnson wins cooperative's EDS scholarship, internship

West Central Electric Cooperative is proud to announce Odessa High School senior Nathan Johnson as the winner of the 2014 West Central Electric Cooperative-Linn State Technical College Electrical Distributions Systems Scholarship.

The scholarship program offers a two-year college scholarship worth \$4,800 to an area student interested in pursuing an associate of applied science degree in electrical distribution systems at Linn State Technical College in Linn, Mo. This scholarship provides for students a quality college training program, a two-year college degree, and on-the-job training, including a required, paid internship at West Central Electric Cooperative to be completed during the summer period between the first and second year of the two-year program.

Johnson, the son of Eric and Dawna Johnson of Odessa, said he chose the lineman profession because he wishes to follow in his grandfather's and father's footsteps and "do something in the electrical field."

"I also wanted a career outside that would keep me busy and help me earn an honest living," he said. "My father, grandfather and two uncles are electri-



Johnson

cians. I want to be a lineman and work for West Central Electric (because) I have grown up in the Odessa area and would like to continue to live in this area."

Johnson is involved in FFA, and credits the organization for allowing him to help others in his community, as well as develop leadership skills. Johnson also attends Lex-La-Ray Technical Center.

Attention WCE Members...

This year, your special Annual Meeting issue of *West Central Electric News* will be

published in the July issue of Rural Missouri. You will receive this issue in mid-July.

This publication is your official notice of the meeting. It will contain information on the annual meeting scheduled for Friday, August 1, 2014, as well as board candidate profiles.

Your official registration card will arrive along with the bill you receive in July 2014.

This card must be brought to the annual meeting in order to register for prizes and vote in the board of directors election.

Headquarters:
7867 S. Highway 13, P.O. Box 452
Higginsville, MO 64037
816-565-4942 or 1-800-491-3803

District office:
506 N. Broadway
Oak Grove, MO 64075

PAY BY PHONE: 1-855-874-5349

Website:
www.westcentralelectric.coop

24-Hour Number:
1-800-491-3803

General Manager:
Mike Gray

*This institution is an equal
opportunity provider and employer.*

Board of Directors:
Densil Allen, President
Clark Bredehoeft, Vice-Pres.
Paul Nolte, Treasurer
Robert Simmons, Secretary
Stan Rhodes, Asst. Sect.
Dale Jarman, Director
Max Swisegood, Director
Richard Strobel, Director
Sandra Streit, Director

Cooperative will return \$1.3 million to members

West Central Electric Cooperative will return \$1.3 million to its members in capital credits refunds in July, according to WCE Office Manager Sandy Starke.

A credit will be issued on the billing due in August for all active members. A check will be mailed to non-members the first part of July.

If you purchased electricity from the cooperative during the years **listed in the box below**, you should receive a check or credit. Checks will not be issued for under \$5.00.

"If a member is on our level payment program, the credit will not affect their monthly amount due," Starke said. "The credit will be applied to the balance on the account.

"If a member has multiple accounts, the credits will be applied based on the previous month's bill; largest balance first, then the next until fully applied. If there are no current balances on the account, the credit will be applied to the primary account, the account that West Central has determined as holding the main membership," she said.

If a member has multiple accounts, and would like the credit applied to a different account than the one determined by the cooperative, members may call the office and request a transfer to the account of their choice.

If you do not see a credit on your account, and feel you should have, you may contact Sandy Starke at 1-800-491-3803.

\$1.3 million in Capital Credits will be refunded in 2014

This year, capital credits will appear as a credit to your electric account, and will be noted as such on your August billing.

Capital Credits being distributed this year include :

- ◆ 100% of NW allocations for the year 1994
- ◆ 60% of NW allocations for the year 1995
- ◆ 75% of WCE's allocations for the year 1995

If you were were a member of the cooperative during these years, you should receive a refund.

Questions about this year's capital credits distribution should be directed to Sandy Starke in the Higginsville office: 800-491-3803 .

The right light saves you money

Selecting a light bulb used to be simple. Incandescents for soft, yellow light in bedrooms, dining rooms and living rooms and cool, white light for offices, garages and other work spaces. Now, there's an amazing array of lighting options.

The most popular light bulbs to replace traditional incandescents are halogen/energy-saving incandescents, compact fluorescent lights and LEDs, or "light-emitting diodes." Although they initially cost more than traditional incandescent bulbs, during their lifetime they save you money because they use less energy.

Here are some details from the U.S. Department of Energy about these efficient alternatives:

Halogens/energy-saving incandescents — Halogen incandescent light bulbs are about 25 percent more efficient and can last up to three times longer than traditional incandescents. They are available in a wide range of shapes and colors and can be used with dimmers.

The 72-watt halogens have replaced the old 100-watt incandescent bulbs, which Congress banned when it passed energy-efficient lighting standards. The ban began in September 2012, so it's possible some stores may still have stocks of the old 100-watt bulbs.

CFLs — Energy Star-qualified CFLs use about 75 percent less energy and last up to 10 times longer than traditional incandescents. A typical CFL can pay for itself in energy savings in less than

nine months.

You can buy CFLs that offer the same brightness and colors as traditional incandescent bulbs. Some CFLs are



encased in a cover to further diffuse the light and provide a shape similar to traditional incandescent bulbs.

CFLs contain a very small amount of mercury and require special handling if they are broken. CFLs should be recycled at the end of their lifespan. Many retailers recycle CFLs for free. Visit www.epa.gov/cfl for cleanup and safe disposal steps.

LEDs — LEDs offer similar light quality to traditional incandescents and use even less energy than CFLs. Energy Star-qualified LEDs use only about 20 to 25 percent of the energy and last up to 25 times longer than traditional incandescent bulbs. They come in a variety of colors, and some are dimmable or offer convenient features such as daylight color and motion sensors.

In addition to standard screw-in bulbs, you'll find LEDs in applications such as recessed down lights, desk lamps, under-cabinet kitchen lighting and outdoor area lights.

INDOOR LIGHTING TIPS

Lighting certainly adds to your electric bill each month. But these lighting tips from the U.S. Department of Energy will help save your energy dollars:

- Replacing 15 inefficient incandescent bulbs in your home with energy-saving bulbs could save about \$50 per year.
- Visit www.energystar.gov to find the right light bulbs for your fixtures.
- When remodeling, look for recessed light fixtures or "cans," which are rated for contact with insulation and are air tight (ICAT rated).
- When replacing incandescent bulbs from recessed light fixtures, use energy-

efficient bulbs that are rated for that purpose. For example, the heat buildup in down lights will significantly shorten the life of spiral CFLs.

- Controls such as timers and photo-cells save electricity by turning lights off when not in use. Dimmers save electricity when used to lower light levels. Select products that are compatible with the energy-efficient bulbs you want to use.
- Keep your curtains or shades open to use natural lighting instead of turning on lights. For more privacy, use light-colored, loose-weave curtains to allow daylight into the room. Also, decorate with lighter colors that reflect daylight.

OUTDOOR LIGHTING TIPS

Don't forget outside lighting when you look at your lighting needs. These tips for outdoor lighting efficiency come from the U.S. Department of Energy:

- Because outdoor lights are usually left on a long time, using compact fluorescents or light-emitting diodes in these fixtures will save a lot of energy. Most bare spiral CFLs can be used in enclosed fixtures that protect them from the weather.
- Pathway lights, step lights and porch lights are good applications for CFLs and LEDs.
- CFLs and LEDs are available as flood lights. These models have been tested to withstand the rain and snow so they can be used in exposed fixtures.
- Look for Energy Star-qualified fixtures designed for outdoor use and that

Continued on page 4

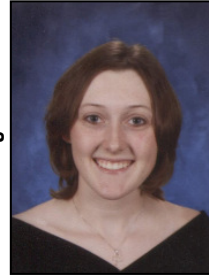
Congratulations
to the winners
of the
**2014
West Central
Electric Cooperative
Scholarship**

Grain Valley High School



Chelsea Gabriel
Lance & Valerie Gabriel
Agribusiness

Holden High School



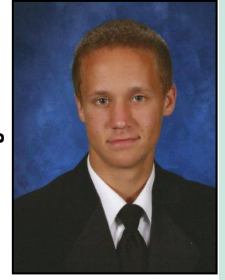
Jessica Farmer
George & Michelle Farmer
Biology

Holden High School



Matthew Laing
Doug & Christi Laing
Pharmacy

Holden High School



Lucas Chambers
Mark & Kim Chambers
Engineering

Odessa High School



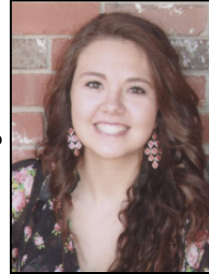
Josey Milner
Terry & Michelle Milner
Graphic Design

Odessa High School



Leah Madsen
Brent & Bessie Madsen
Nursing/Spanish

Odessa High School



Lonnie Todd
Douglas & Bobbie Todd
Nursing

Knob Noster High School



Kortnie Bellury
Ronald & LaRena Bellury
Graphic Design/Bus. Mgmt.

Fort Osage High School



Alex Siefker
Wayne & Amy Siefker
Agricultural Systems Mgmt.

Center Place Restoration HS



Gabrielle Mercer
Phillip & Susan Freeze/Corwyn Mercer
Elementary Education

Warrensburg High School



Leslie Baker
Howard Baker/Kathy Baker
Elementary Education

Warrensburg High School



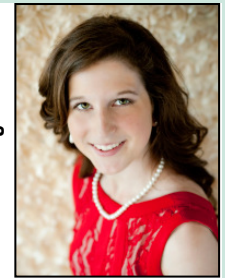
Timothy Russell
Sherry Swope
Environmental Science/Pre-law

Concordia High School



Kayla Sinclair
Carla & Brett Roepe/Randy Sinclair
Chemistry/Pre-dental

Concordia High School



Nora Faris
Paul & Betty Faris
Journalism/Ag Economics

Arndt Christian Academy



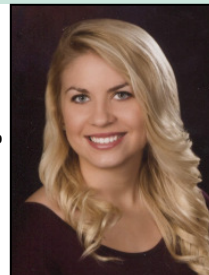
Joseph Arndt
Donald & Eva Arndt
Criminal Justice

Santa Fe High School



Morgan Bishop
Robert & Kimberly Bishop
Physical Therapy

Santa Fe High School



Jessica Drake
Garold & Christine Drake
Physical Therapy

Oak Grove High School



Trevor Dunn
Doug & Brenda Drury/Rodney Dunn
Aerospace Engineering

Oak Grove High School



Emily Zirkle
Brian & Marla Zirkle
Business Marketing

Lafayette Co. C-1 High School



Rachel Simmons
Mark & Annette Simmons
Agriculture Business

Lafayette Co. C-1 High School



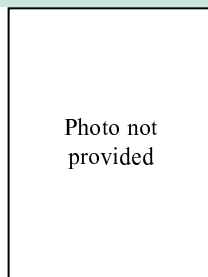
Emma Dyer
Wally & Kelly Dyer
Business Administration

Lafayette Co. C-1 High School



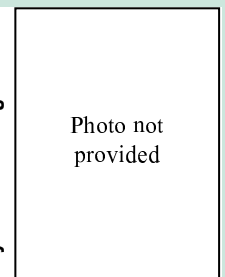
Ian Gash
Dave & Kristy Gash
Exercise Science

Lafayette Co. C-1 High School



Rosemary Haston
James and Lucinda Haston
Elementary Education

Lafayette Co. C-1 High School



Brett Nolte
Robert & Cheryl Nolte
Nutrition & Fitness

From the Boardroom...

Regular meeting of the Board of Directors held March 27, 2014

The meeting was called to order by President Densil Allen. Robert Simmons, Secretary of the Cooperative, caused the minutes of the meeting to be kept. The following Directors were present: Max Swisegood, Clark Bredehoeft, Paul Nolte, Dale Jarman, Richard Strobel, Densil Allen, Robert Simmons, Sandra Streit and Stan Rhodes. Also present were General Manager Mike Gray, Adm. Asst. and Benefits Admin Kim Lewis and cooperative attorney Matt Krohn.

APPROVAL OF AGENDA

After discussion, the agenda was approved.

APPROVAL OF MINUTES

The unapproved minutes of the regular meeting of the board of directors held Feb. 27, 2014 were approved.

REVIEW OF EXPENDITURES FOR FEBRUARY

An itemized list of expenditures for February was presented to the board, and the payment of the bills was ratified.

APPROVAL OF REPORTS

The following February 2014 reports were approved: Operating Report (RUS Form 7) and Comparative Operating Statement including the Financial Statistical Report with month and budget comparisons and statistical data pertaining to operating revenue, expenses, margins, assets, liabilities, and KWH sales; Treasurer's Report and the written monthly Construction, Retirement, Maintenance and Operations Report.

SAFETY REPORT

Gray reported no lost time accidents during the month.

MEMBERSHIPS

The applications submitted for membership in the cooperative were accepted and approved. Directors reviewed a list of requests for termination of membership in the cooperative which, along with their requests that their billings be deducted from their deposits and the remainder, if any, be refunded to them, were accepted and approved.

N.W. ELECTRIC POWER COOPERATIVE, INC. REPORT

Gray and Nolte reported their attendance at the recent board meeting and shared highlights of the meeting. NW's annual meeting will be held April 15-16.

NRECA ANNUAL MEETING REPORT

Nolte, Strobel and Bredehoeft reported on their attendance at the NRECA annual meeting, and shared highlights and information received at the meeting.

SCHOLARSHIP COMMITTEE REPORT

Jarman reported that Sara Daubendiek, Fort Osage High School was named winner of the \$1,000 renewable scholarship from the 2014 John & Kathryn English Memorial Scholarship Trust. Other recipients of a \$1,000 one-time award are: Garret Hatthews of Crest Ridge High School, Timothy Russell of Warrensburg High School, Lonnie Todd of Odessa High School and Kayleah Tye of Lexington High School.

NRECA DIRECTORS' CONFERENCE REPORT

Swisegood reported on his attendance and highlights of the NRECA Directors' Conference. Allen, Strobel and Streit shared their experiences of directors' classes taken.

DISCUSSION ON RATE 50 INCREASE

Gray reported on the need for a rate increase for Class 510. After discussion, a resolution setting Class 510 rates for wastewater and sewer treatment plants at \$75 service availability, \$9.60 demand charge and \$.0425 kWh was approved by directors.

2014 CAPITAL CREDIT RETIREMENTS

Directors approved the following capital credits retirements to be refunded in 2014: 100% of NW credits from 1994, 60% of NW credits from 1995 and 75% of WCE credits from 1995.

SELECT AND APPROVE NW BOARD NOMINEES

Gray and Swisegood were named WCE's representatives on the NW board.

APPROVE DELEGATE CHAIRMAN AND ALTERNATE FOR NW ANNUAL MEETING

The board voted to appoint Simmons as chairman of the delegation and Allen as alternate.

MANAGER'S REPORT

Gray provided his Manager's Report for the month. He reported on the following: 1) The Nominating Committee meeting scheduled for May 14; 2) investment fund changes of custodian; 3) report on summer part-time help; 4) a Linn Tech part-time applicant; 5) Youth Tour finals scheduled for April 3; and 6) annual meeting deadlines.

Gray also advised the board of an opportunity to donate to the State Fair Foundation. After discussion, directors voted to donate \$500 to the State Fair Foundation.

EXECUTIVE SESSION AND ADJOURNMENT

The board entered into executive session, following which they reconvened.

UNFINISHED BUSINESS

None.

NEW BUSINESS

None

MEETING ADJOURNED

FINANCIAL REPORT • *Statement of Operations* • March 2014

	This month	YTD 2014	YTD 2013
Revenue	2,407,028	8,388,012	7,564,310
Power Bill Expense	1,384,512	4,618,814	4,323,638
Operation & Maint. Expense	469,346	1,376,856	1,414,501
Depreciation Expense	151,407	452,642	440,281
Interest Expense	<u>72,457</u>	<u>286,543</u>	<u>266,242</u>
Total cost of Srv. (Total Expense)	2,077,722	6,734,855	6,444,662
Operating Margins (Revenue less Expenses)	329,306	1,653,157	1,119,648
Other Margins	<u>22,247</u>	<u>56,816</u>	<u>71,440</u>
TOTAL MARGINS	351,553	1,709,973	1,191,088

Practical pointers for making sure you stay safe at home

From page 1

- Use extension cords as a temporary solution, and never as a permanent power supply.
 - Do not place extension cords in high traffic areas, under carpets, or across walkways, where they pose a potential tripping hazard.
 - Use a surge protector to protect your computer and other electronic equipment from damage caused by voltage changes.
 - Heavy reliance on power strips is an indication that you have too few outlets to address your needs. Have additional outlets installed by a qualified, licensed electrician.
 - Keep liquids, including drinks, away from electrical items such as televisions and computers.
- Electrical safety awareness and education among consumers, families, employees, and communities will prevent electrical fires, injuries, and fatalities.
- The Electrical Safety Foundation International (ESFI) is a 501(c)3 non-profit organization dedicated exclusively to promoting electrical safety. For more information about ESFI and electrical safety, visit www.electrical-safety.org.*

The right light can save you money

From page 2

- come with features such as automatic daylight shut-off and motion sensors.
- Also consider solar-powered outdoor lighting.
- Home improvement stores, lighting stores and departments, landscaping centers and online sites offer many solar light options, most of which you can simply hang or anchor in the ground yourself.

WHAT DO LIGHTING LABELS TELL YOU?

Many of us routinely read food labels before we purchase to find out calories, fat, carb and protein content among other things. Now you can find the right light bulb by reading the Lighting Facts label, which appeared in 2012. The label includes:

- Brightness, measured in lumens
 - Estimated yearly energy cost (similar to the Energy Guide label)
 - Lifespan
 - Light appearance (from warm to cool)
- In the past, we bought bulbs based on how much energy, or watts, they used. Now we buy lights based on how much light they provide. Instead of measurements in watts, bulbs are measured in lumens, which is a measure of the brightness of a bulb. The higher the number of lumens, the brighter the bulb.
- If you're replacing inefficient watt bulbs:
- Replace a 100-watt bulb with a 1,600-lumen bulb
 - Replace a 75-watt bulb with a 1,100-lumen bulb
 - Replace a 60-watt bulb with an 800-lumen bulb
 - Replace a 40-watt bulb with a 450-lumen bulb
- Lighting labels also tell you the warmth or coolness of the light bulb:
- Light color is measured on a temperature scale known as Kelvin or "K."
 - Lower numbers mean the light appears more yellow; higher K numbers mean the light is whiter or bluer.
 - Most Energy Star-qualified bulbs are made to match the color of incandescent bulbs at 2,700-3,000K.
 - For a whiter light, look for bulbs marked 3,500-4,100K.
 - For the whitest, almost blue, light, look for bulbs marked 5,000-6,500K.