



A Touchstone Energy® Cooperative

West Central *Electric News*

May 2014



West Central Electric Cooperative, Inc. ~ Serving our members' needs since 1939

Daubendiek is named 2014 English Scholar

*Four other 4-Hers
also awarded funds*

Look at Sarah Daubendiek, and you will see many things: A top-notch student, a dedicated high-school band member, a talented athlete, an active



Daubendiek

FFA member, a Girl Scout who has earned the prestigious Gold Award, and the Lafayette County 4-H queen. The John and Kathryn English Memorial Scholarship Committee saw something else, too -- an English Scholar who would make West Central Electric Cooperative and the English family proud.

Following an application and interview process, Daubendiek was named the 2014 John and Kathryn English Memorial Scholarship winner, and will receive a four-year, renewable scholarship worth a potential \$4,000.

Even with a packed schedule including a variety of school and community activities, Daubendiek maintains grades that keep her in the top 10 percent of her class and remains active in her 4-H club, regarding it as an important part of her life.

"I think that I benefit differently from different types of activities. I study hard

Continued on page 2



Be prepared for severe storms and the electrical dangers they can bring

Severe storms are most likely to strike from April to July. Long before storm season sets in, you should prepare for a storm, and know how to stay safe.

BEFORE THE STORM

Assemble a kit of essentials, such as water, battery-operated flashlights and radios. Keep a list of emergency phone numbers that includes the electric utility. Be prepared for the possibility of a prolonged outage due to power line and electric equipment damage.

During an outage, switch off lights and appliances to prevent overloading circuits and damaging appliances when power is restored. Leave one lamp or switch on as a signal for when your power returns.

If severe weather is on its way, pay attention to local weather reports and recommendations. A tornado or severe storm watch means that conditions are favorable for those weather conditions

forming. A warning means that dangerous weather conditions are developing and imminent.

kitchens, and anywhere else where water and electricity may meet.

Lightning can travel up to 10 miles



Consider having Ground Fault Circuit Interrupters (GFCIs) professionally installed or purchasing a portable GFCI. GFCIs detect dangerous electrical situations, and cut off power before a person can be shocked. These dangerous electrical situations are likely to occur around water, so GFCIs are recommended in bathrooms, laundry rooms,

away from a storm, so seek shelter as soon as you hear thunder.

AFTER THE STORM

When venturing outside, stay away from downed power lines and be alert to the possibility that tree limbs or debris may hide an electrical hazard. Assume that any dangling wires you encounter

Continued on page 4

Headquarters:

7867 S. Highway 13, P.O. Box 452
Higginsville, MO 64037
816-565-4942 or 1-800-491-3803

District office:

506 N. Broadway
Oak Grove, MO 64075

PAY BY PHONE: 1-855-874-5349

Website:

www.westcentralelectric.coop

24-Hour Number:

1-800-491-3803

General Manager:

Mike Gray

Board of Directors:

Densil Allen, President
Clark Bredehoeft, Vice-Pres.
Paul Nolte, Treasurer
Robert Simmons, Secretary
Stan Rhodes, Asst. Sect.
Dale Jarman, Director
Max Swisegood, Director
Richard Strobel, Director
Sandra Streit, Director

Daubendiek is 2014 English Scholar...

Todd, Tye, Matthews, Russell win \$1,000 scholarships from trust

From page 1

and understand that at this stage of my life, my academics are top priority," she said. "Although academics are preparing me for my financial future, my extra-curricular interests express who I am as a person. The opportunities I have had in both 4-H and FFA are my most memorable experiences."

Daubendiek is the daughter of Bill and Janet Daubendiek of Sibley, and attends Fort Osage High School. She is a 10-year member of Napoleon Cloverleaf 4-H Club, in which she has held every office, won numerous awards and served on the county council. She plans to participate in the collegiate 4-H program at the University of Missouri-Columbia where she will study biochemistry.

The John & Kathryn English Memorial Scholarship was made possible by former WCE board member John English and his wife, Kathryn, who created the trust to assist graduating 4-H members with their educational expenses.

The committee also chose to award four one-time \$1,000 scholarships to Lonnie Todd of Odessa High School, Kayleah Tye of Lexington High School, Garret Matthews of Crest Ridge High School and Tim Russell of Warrensburg High School.

LONNIE TODD

Todd has been member of 4-H for eight years--seven as a member of 40-ville 4-H Club, and one year as a member of Mighty-MO 4-H Club. She will attend Avila University to study nursing.

One of her favorite 4-H projects is working with the Mayview Lion's Club to coordinate the cook-shack during the Mayview Picnic. She also enjoys showing rabbits where she has won "Best of Show."

Todd is the daughter of Douglas and Bobbie Todd of Centerview.



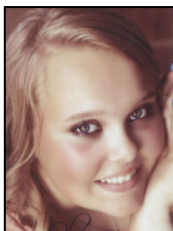
Todd

KAYLEAH TYE

Tye has been a member of Fairview 4-H Club for 11 years. In the fall, she will attend Southwest Baptist University and study nursing.

Through 4-H, Tye has enjoyed showing horses, participating in the Super Farmer activities and performing community service.

Tye is the daughter of John and Alana Tye of Lexington.



Tye

GARRETT MATTHEWS

Matthews is a 10-year-member of Mt. Moriah Hustlers' 4-H Club. He plans to attend the University of Missouri-Kansas City to study pharmacy.

He is a past winner of the "I Dare You Leadership Award" and also serves as a junior club leader.

He is the son of Grant and Stephanie Matthews of Centerview.



Matthews

TIM RUSSELL

Russell is a 10-year-member of the Chilhowee Indians 4-H Club where he currently serves as president. He will attend the University of Missouri-Columbia and major in pre-law.

He was nominated for the 2013 Prudential Spirit of Community Award where he placed in the top 10 percent of Missouri Youth. He has also attended the 4-H Missouri Citizens in Action Conference.

Russell is the son of Sherry Swope of Warrensburg.



Russell

2014 West Central Electric Cooperative Nominating Committee

Following is a list of the members named to the 2014 West Central Electric Cooperative Nominating Committee. If you are interested in serving on West Central Electric Cooperative's board of directors, contact any of the committee members in your district listed below. The committee will convene on Wednesday, May 14, 2014 to nominate individuals to be placed on the official ballot. Nominees will be voted on at the annual meeting Aug. 1, 2014 in Warrensburg.

District I

Walter Hutcherson
39607 E. Fricke Rd.
Oak Grove, MO 64075
816-625-3837

District II

Dennis Knipmeyer
17905 Long Grove Rd.
Higginsville, MO 64037
660-584-2741

Ellis Dieckhoff
20795 Jennings Rd.
Higginsville, MO 64037
660-584-7336

Dana Sander
32376 King Rd.
Alma, MO 64001
660-674-2654

District III

Sara Willard
491 NW 900 Rd.
Warrensburg, MO 64093
660-747-7469

Tim Evert
274 NW 800 Rd.
Warrensburg, MO 64093
660-909-2024

Gary Bell
1048 NE 121 Rd.
Warrensburg, MO 64093
660-747-9285

District IV

Melissa Ginther
550 SE County Rd. Y
Warrensburg, MO 64093
660-909-7962

Jerry Phoenix
707 NW 100 Rd.
Centerview, MO 64019
(660)-656-9527

**Terms will expire for District 3 directors Robert Simmons, Densil Allen and Richard Strobel. Members will elect two directors from District 3 and one director from the new "At-Large" District 5.*

Board of Directors Qualifications

No person shall be eligible to become or remain a director or to hold any position of trust in the cooperative who:

(A) is not a member and bona fide resident in the area served or to be served by the cooperative; or

(B) is in any way employed by or financially interested in a competing enterprise or business selling electric energy supplies to the cooperative, or a business primarily engaged in selling electrical or plumbing appliances, fixtures or supplies to the members of the cooperative; or

(C) is the incumbent of or a candidate for an elective public office in connection with which a salary or compensation in excess of \$100 per annum is paid. Upon establishment of the fact that a director is holding office in violation of any of the foregoing provisions, the board of directors shall remove such director from office.

(D) Has been an employee of the cooperative within the last three (3) years.

Nothing contained in this section shall affect in any manner whatsoever the validity of any action taken at any meeting of the board of directors.

Youth Tour 2014 RURAL ELECTRIC



Youth Tour Winner

Molly Bertz



Youth Tour Winner

Heather Kopp



Youth Tour Winner

Beth Harness

Area students prepare for 'trip of a lifetime'

HIGGINSVILLE, Mo. – Three area high school students are preparing to pack their bags for a week in Washington, D.C.

Molly Bertz of Lafayette County C-1 High School, Heather Kopp of Odessa High School and Beth Harness of Chilhowee High School were named winners of the annual Rural Electric Youth Tour competition sponsored by West Central Electric Cooperative, Inc. They will receive an all-expense-paid trip to the nation's capital June 13-19 for the National Rural Electric Youth Tour.

Finalists in the 2014 competition participated in the second round April 3 at West Central Electric Cooperative's headquarters in Higginsville where they delivered their essays during the oral competition. The top three winners received the trips to the National Rural Electric Youth Tour.

West Central's delegates, their teachers and families will be invited to participate in Family Capital Day June 13 in Jefferson City where they will receive a private tour of the State Capitol Building, the Missouri State Archives, and the Supreme Court. Following a banquet and orientation in Jefferson City that evening, Missouri's 80-plus-member delegation will travel to Washington, D.C. on June 14. While there, delegates will visit, among other places, the Washington Cathedral, the Washington Monument, and the Jefferson, Lincoln, Roosevelt, Vietnam Wall and Korean War memorials. They will get the opportunity to witness the Changing of the Guard Ceremony at the Tomb of the Unknown Soldier in Arlington National Cemetery, take an evening dance cruise on the Potomac River, and tour the Smithsonian Museums.

Also on the agenda is Youth Day which is attended by all approximately 1,500 delegates from 44 states, and a day on Capitol Hill where students can meet with their senators and representatives.

A total of 60 entries were received from six different schools.

Delegates get psyched for CYCLE!

Local students Savannah Heath, Ali Landrum and Jillian Samson all of Warrensburg High School, George Cooper of Crest Ridge High School and Kelsey Herring of Kingsville High School will attend the Cooperative Youth Conference and Leadership Experience in Jefferson City July 9-11.

CYCLE, which is coordinated by the Association of Missouri Electric Cooperatives, has been recognized as the top cooperative youth conference in the nation. During the conference, students will spend a day at the Missouri State Capitol Building, learn about cooperatives, participate in leadership and team-building activities, and hear top-notch speakers. Past speakers at CYCLE have included Darrell

Scott, whose daughter, Rachel, was killed in the shootings at Columbine High School in 1999 and Mike Schlappi, wheelchair basketball world champion and paralympic medalist whose message is "If you can't stand up -- stand out." Students will also have the opportunity to write and debate their own bills on the floor of the Missouri House of Representatives.



CYCLE WINNERS...Five students will represent West Central Electric at the Cooperative Youth Conference and Leadership Experience in July. (L-r) WCE Board Secretary Robert Simmons, Ali Landrum, George Cooper, Savannah Heath, Jillian Samson, Kelsey Herring and WCE Board member Sandra Streit.

The impact of EPA regulations on you

For the past year, Missouri's electric cooperatives have been asking members to Take Action to protect affordable electricity. In case you've missed it, the Environmental Protection Agency (EPA) has proposed to limit carbon dioxide emissions at new power plants. This is concerning because these regulations, along with the ones EPA has in store for existing plants, have the potential to drive up your electric bills.

Most of the electricity used in Missouri and elsewhere in the Midwest — 80 percent — comes from coal. So this is an issue that affects ALL consumers, not just those who are members of electric cooperatives.

Now is the time for all of us to join our voices together to send this clear message to those officials who are drafting these new rules: "Please remember consumers as you are writing these regulations."

You can help by visiting www.Action.coop today and sending a comment to

the EPA. You can also help by sharing the link with your neighbors, friends and family.

What's at stake? Beyond keeping our ability to provide safe, affordable electricity, we're worried about the impact these regulations will have on jobs in Missouri.

You no doubt can gauge what a sizeable increase in your home electric bill would do to your finances. But consider what higher bills would do to businesses, especially those that use large amounts of electricity. It's possible a large rate increase could force manufacturing to leave the state or even the country, taking jobs with it.

Jobs related to coal-fired generation pay excellent wages, whether they are in mining, transportation or at power plants.

According to the American Association of Railroads, no single commodity is as important to the railroad industry as coal, which accounts for 41 percent of total

rail tonnage and 21.6 percent of railroad profits.

Clearly, coal generation plays a key role in keeping the U.S. economy strong. What's more, we have a 200-year supply of coal. Some say we are the "Saudi Arabia" of coal, a reference to that country's dominance in oil production.

While these regulations are technical, the potential increase in electric rates is something we take personally because we know it's difficult to make ends meet month-to-month. We know the tough choices you face in trying to live on a budget. That's what sets electric cooperatives apart from other utilities and that's why we must stick together.

Thousands have answered the call already and sent comments through www.Action.coop. In fact, Missouri leads the nation with more than 100,000 comments sent to date. But we need more. It only takes 30 seconds to help raise our voices together.

Around the state, employees and directors from every Missouri electric cooperative have joined this cause. We've encouraged all of our employees to sign up ... and ask their friends and families.

And now we're asking the same from you.

We need you to take a stand and urge everyone you know to join us. It doesn't matter if they are not served by an electric cooperative. Those who get their electricity from municipal utilities or investor-owned utilities will also be affected.

Visit www.Action.coop. And talk to your neighbors about what we're doing and why.

We're powering the future, driving economic growth and fostering innovation for you. And we don't want these new regulations to get in the way of progress.

Please join the call and help us keep our nation moving forward.

From the Boardroom...

Regular meeting of the Board of Directors held February 27, 2014

The meeting was called to order by President Densil Allen. Robert Simmons, Secretary of the Cooperative, caused the minutes of the meeting to be kept. The following Directors were present: Max Swisegood, Clark Bredehoeft, Paul Nolte, Dale Jarman, Richard Strobel, Densil Allen, Robert Simmons, Sandra Streit and Stan Rhodes. Also present were General Manager Mike Gray, and cooperative attorney Matt Krohn.

APPROVAL OF AGENDA

After discussion, the agenda was approved.

APPROVAL OF MINUTES

The unapproved minutes of the regular meeting of the board of directors held Jan. 24, 2014 were approved.

REVIEW OF EXPENDITURES FOR JANUARY

An itemized list of expenditures for January was presented to the board, and the payment of the bills was ratified.

APPROVAL OF REPORTS

The following January 2014 reports were approved: Operating Report (RUS Form 7) and Comparative Operating Statement including the Financial Statistical Report with month and budget comparisons and statistical data pertaining to operating revenue, expenses, margins, assets, liabilities, and KWH sales; Treasurer's Report and the written monthly Construction, Retirement, Maintenance and Operations Report.

SAFETY REPORT

Gray reported no lost time accidents during the month.

MEMBERSHIPS

The applications submitted for membership in the cooperative were accepted and approved. Directors reviewed a list of requests for termination of membership in the cooperative which, along with their requests that their billings be deducted from their deposits and the remainder, if any, be refunded to them, were accepted and approved.

N.W. ELECTRIC POWER COOPERATIVE, INC. REPORT

Gray and Nolte reported their attendance at the recent board meeting and shared highlights of the meeting.

AMEC REPORT

Bredehoeft reported on the AMEC Legislative Conference and provided a report on legislation of interest to the cooperatives, as well as grassroots efforts in response to proposed EPA regulations. Gray reported on AMEC's legislative talking points.

APPROVE SAFETY CONSULTANT CONTRACT EXTENSION.

Directors approved a contract extension with Berry Consulting, LLC for three years.

MANAGER'S REPORT

Gray provided his Manager's Report for the month. He reported on the following: 1) PCA compliance; 2) recent phone scams; 3) the KRTA Program; 4) damaged pole matter; 5) a member-relation matter; 6) Operation Round-Up; 7) a new trial date for a pending lawsuit; 8) the option of discounting early retirement of capital credits and 9) electric rates by loan (recovering cost).

ALLOCATION OF CAPITAL CREDITS

Directors approved the allocation of 2013 capital credits

AXA INVESTMENT ACCOUNT

Manager Gray and Office Manager Sandra Starke were named trustees of the English investment account

UNFINISHED BUSINESS

None.

NEW BUSINESS

None

MEETING ADJOURNED

FINANCIAL REPORT • Statement of Operations • February 2014

	This month	YTD 2014	YTD 2013
Revenue	2,885,077	5,980,984	5,176,237
Power Bill Expense	1,562,357	3,234,302	2,913,458
Operation & Maint. Expense	445,558	907,509	907,093
Depreciation Expense	150,919	301,236	293,155
Interest Expense	103,514	214,086	183,080
Total cost of Srv. (Total Expense)	2,262,348	4,657,133	4,296,786
Operating Margins (Revenue less Expenses)	622,729	1,323,851	879,451
Other Margins	17,455	34,570	26,418
TOTAL MARGINS	640,184	1,358,421	905,869

Be prepared for severe storms and electrical dangers they can bring

From page 1

are energized and dangerous. Warn others to stay away and contact the electric utility.

If you are driving and come upon a downed power line, stay in your vehicle, warn others to stay away and contact emergency personnel or electric utility. Also when driving, be careful at intersections where traffic lights may be out. Stop at all railroad crossings, and treat road intersections with traffic signals as a four-way stop before proceeding with caution.

Before re-entering storm-damaged buildings or rooms, be sure all electric and gas services are turned off. Never attempt to turn off power at the breaker box if you must stand in water to do so. If you can't reach your breaker box safely, call your electric utility to shut off power at the meter.

Never step into a flooded basement or other area if water is covering electrical outlets, appliances or cords. Be alert to any electrical equipment that could be energized and in contact with water. Never touch electrical appliances, cords or wires while you are wet or standing in water.

Do not use water-damaged electronics until a qualified electrician has inspected them and ensured they are safe.

When using a generator, follow all manufacturers' recommendations. Keep the generator dry and never plug it into a wall outlet or directly into the home's wiring.

This could inadvertently energize the utility lines and injure yourself or others working to restore power. Your generator should be installed with a transfer switch to prevent electricity from leaving your generator and going into power lines where it can kill line men.

We can't control what Mother Nature sends our way in the form of damaging storms. However, we can control our response to any and all disasters.

Your electric cooperative has a plan that ensures every employee knows their role during a time of crisis. You can rest assured we will do our utmost to make sure you don't stay in the dark for long.

But we also believe you should have a plan for those times when nature deals us a blow. Being prepared — and staying that way — doesn't take long and doesn't have to cost you much either.