



West Central Electric Cooperative

June 2025

A Touchstone Energy® Cooperative



Electric News

Youth Tour & CYCLE delegates named

PAGE 4

June is Level Pay
recalculation month
How does it work?
page 3

Annual Meeting mail-in
ballot procedures
How to vote
page 3

Capital Credit allocations
Member equity amount
for 2024 is announced
page 6

West Central Electric News
a news service for the members of



**West Central Electric
Cooperative, Inc.**



Headquarters

7867 S. Highway 13, P.O. Box 452,
Higginsville, MO 64037
816-565-4942 or 1-800-491-3803

PAY BY PHONE: 1-855-939-3639

To report outages 24/7

Call 816-565-4942 or 1-800-491-3803
Report online at
www.westcentralelectric.coop under
"Report Outage"

District office

506 N. Broadway, Oak Grove, MO 64075

Website:

www.westcentralelectric.coop



facebook



Instagram

General Manager

Michael Newland

Board of Directors

Densil Allen Jr., *President*
Clark Bredehoeft, *Vice President*
Dale Jarman, *Treasurer*
Robert Simmons, *Secretary*
Stan Rhodes, *Asst. Secretary*
Richard Strobel, *Director*
Jeremy Ahmann, *Director*
Colby Dowell, *Director*
Elizabeth Houtsma, *Director*

*This institution is an equal opportunity
provider and employer.*

We are so proud of our local youth!

Looking through the pages of this month's *West Central Electric News*, it is so exciting to see it filled with our area youth, highlighting some of their great accomplishments.

We have five students who long ago made a strong commitment to 4-H and have been involved in this fantastic organization for half of their lives or more. The 4-H organization turns out some great leaders, and these students demonstrate the characteristics of exactly the type of students John and Kathryn English wanted to reward and recognize when they established the John & Kathryn English Memorial Scholarship many years ago.

We also have a story on six students who will be representing our cooperative in Washington, D.C. this summer on the Rural Electric Youth Tour, and in Jefferson City at the Cooperative Youth Conference and Leadership Experience, or CYCLE, as it is known.

These students will see our nation's capital, our state's capital, make connections, and learn what it means to be a part of something bigger than just themselves. It is always a pleasure to witness them at the beginning of a new path.

A full page is dedicated to some amazing young achievers who were awarded the West Central Electric Cooperative Scholarship. These students not only work hard to achieve in the classroom, but they are also contributing members of their local communities. They are involved in school, community and church activities. They are employed, they volunteer and they make us proud that they are a part of us.

It is encouraging to see the young people of our area and what they are achieving. Their future is bright, and we are fortunate to play a small part to further their journey on to great things!

THE FUTURE IS BRIGHT!

**We are so proud of the great things
our area youth are accomplishing**

*Congratulations to our
Youth Tour, CYCLE &
scholarship winners!*



**West Central Electric
Cooperative, Inc.**

A Touchstone Energy® Cooperative



What you need to know

WCE Annual Meeting Voting MAIL-IN BALLOT PROCEDURES



Members who are unable to attend the 86th annual meeting on Friday, Aug. 1, 2025, may still participate in the board of directors election by mail-in ballot.

- You must submit a request for a voting packet either by calling the office and requesting a packet to be sent to you, or by mailing in the form that was included with your bill that is due in June.
- All requested ballots will be mailed to members after **June 30, 2025**.
- Once you receive your voting packet, you may cast your vote and follow the instructions to send the ballots to the cooperative's attorney.
- Marked ballots **must arrive NO LATER THAN July 31, 2025** at the cooperative attorney's office in order to have the votes included in the count.
- Members who are able to attend the meeting may still vote in person at the meeting and do not have to submit a mail-in ballot.

Questions regarding the mail-in voting procedures may be directed to Member Services Manager Brent Schlotzhauer at 800-491-3803 or 816-565-4942.

Following is the bylaw article which allows voting by mail-in ballot:

Article III *Meetings of Members*

Section 5. Voting

Each member shall be entitled to only one vote upon each matter submitted to a vote at a meeting of the members. All questions shall be decided by a vote of a majority of the members voting thereon in person, or by mail-in ballot, in addition to those voting by any other lawful means established by resolution of the Board of Directors of the Cooperative at least sixty (60) days prior to the date of said meeting and specified in the notice of the meeting, except as otherwise provided by law, the Articles of Incorporation or these bylaws.

Section 6. Proxies

Voting by proxy shall not be permitted.

June is recalculation month for 'Level Pay' accounts

Members who are on the cooperative's Level Payment Plan will see their bills recalculated with the billing period ending in June, according to West Central Electric CFO Rebecca Hoefflicker.

"The new amounts will be reflected on all billings that are due June 22 or after," she said.

Level Payment Plan Requirements:

West Central Electric Cooperative members who have had service in their name for at least 12 months and meet the requirements below are eligible.

"This billing plan is great for budgeting, as it eliminates high and low amounts due and results in the same amount due each month," Hoefflicker said.

To receive full benefit of participation in the Level Payment program, you must make your monthly payment by the normal due date, maintain a good payment record with no returned checks on your account, and have no more than one trip for collection. Failure to do so may result in removal from the program and could result in a requirement to pay any balance due in full.

How it works:

- The 12-month average is calculated by using the previous 12 months' bills.
 - If the member is new to the Level Payment Plan, this 12-month average is the amount the member will pay for the next 12 months.
 - If the member was previously on the Level Payment Plan, we compare and "true up" your previous 12 months' actual bills with what was paid. Your 12-month average is determined, and any credit or debit carryover is divided by 12 and added or subtracted to the 12-month average to determine your next year's monthly amount.
 - Each month a bill is mailed (or can be viewed online, if paperless) showing actual usage compared to the level payment amount you pay.
- To sign up for Level Payment Plan, or if you have any questions, please contact the office at 800-491-3803.

Practice Storm Safety

Have a plan in place and make a storm kit.

Listen to local alerts and know where to shelter.

Stay off the roads if trees and power lines are down.





WCE delegates are set for Youth Tour and CYCLE trips

Three area high school students are preparing to pack their bags for a week in Washington, D.C., and three will represent West Central Electric in Jefferson City following the annual Youth Tour and CYCLE finals held in April.

Delaney Howe and Olivia Basinger of Warrensburg High School, and Ashlyn Kolb of Crest Ridge High School were named winners of the annual Rural Electric Youth Tour competition. They will travel with more than 100 Missouri delegates to join more than 1,800 students from across the country in our nation's capital in June.

Crest Ridge High School students Savannah Bramwell, Landen Nelson and Kegan Walsh will attend the Cooperative Youth Conference and Leadership Experience (CYCLE) in Jefferson City in July, where they will join more than 100 students from Missouri cooperatives to explore our state capital.

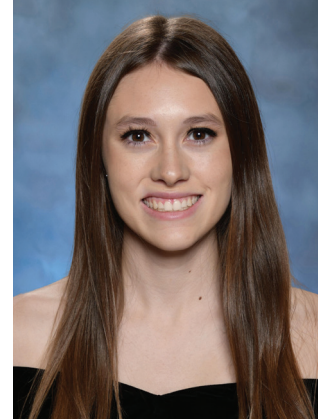


2025 John & Kathryn English Scholars



Ryan Munsterman

4-year, \$1,000 renewable
(potential \$4,000 award)



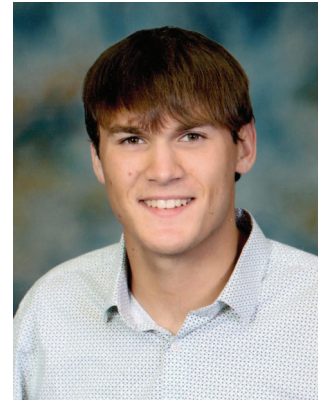
Jaelyn McDonald

4-year, \$1,000 renewable
(potential \$4,000 award)



Abby White

One-year Winner



Brayden Reid

One-year Winner



Rachel Stoll

One-year Winner

***The John & Kathryn English Memorial Scholarship Trust** was created under the terms of the Last Will & Testament of Kathryn English. The purpose of this trust is to provide scholarship grants for high school graduates who are active 4-H members at the time of their high school graduation and who desire to attend college to pursue a degree. John English, a former director of West Central Electric Cooperative, Inc., designated West Central's Board of Directors as trustees of the Memorial Scholarship Trust.

2025 West Central Electric Cooperative Scholars

\$1,000 scholarship winners



Lillie Mannering



Abby White



Grace Smith



Rylee Adams



Jackson Baker



Lany Sisk



Brayden Reid



Kellen Fiene



Emily Wilkens



Landon Langkrah



Ashlynn Huffmaster



Brilynn Zykan



Levi Wallace



Ella Virus



Ryan Kunkel



Lillian Keller



Jackson Treece



Kaydee Langford



Alexis Miller



Miriam Cook



Brooklyn Spencer



Addison Mullins

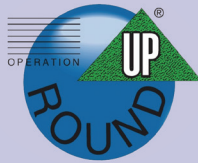


Isaac Hawthorne

***The West Central Electric Cooperative Scholarship** is available to students whose parents or legal guardians are current members of the cooperative. The funds are awarded to students graduating high school and planning to attend a college, university, trade or technical school the fall following their graduation.

From your cooperative

New WCE RoundUp Foundation board members named



Appointed: March 2025

Hometown: Higginsville, Mo.

Term expires: March 2028



Lance Tieman

Appointed: March 2025

Hometown: Warrensburg, Mo.

Term expires: March 2028



Sarah Willard

Current RoundUp Foundation members: President Amy Hoover, Holden; Vice-President Kyle Grumke, Wellington; Secretary Vivian Bumgarner, Oak Grove; Treasurer Melissa Luebbert, Concordia; Kim Hall, Warrensburg; Devin Graf, Blackburn; Patty Raker, Holden; Lance Tieman, Higginsville; Sarah Willard, Warrensburg

RoundUp board meets quarterly to consider grant applications for funding of local projects.

The RoundUp program lets WCE members support their local communities by rounding up their bill to the nearest dollar with the extra going to RoundUp. The average annual donation for most members is around \$6 per year.

CAPITAL CREDITS (member equity) ALLOCATION FOR 2024

West Central Electric Cooperative's 2024 margins (profits) have been allocated to each member who purchased electricity in 2024. The capital credits, (or member equity), amount allocated can be found on the bill you received in May.

2024 Allocation Calculation

Step 1

Figure your amount billed in 2024

Beginning with the bill reflecting usage for January 2024 and ending with the bill reflecting usage for December 2024.

Step 2

Multiply your total amount billed by the 2024 allocation amount of:

0.135272174052655*

This total will give your amount of capital credits allocated to you for 2024.

2024 Allocation Example

\$1,000 total billing for 2024

$$\begin{array}{r} \$1,000 \\ \times \\ 0.135272174052655^* \\ \hline = \\ \$135.27 \\ \text{2024 allocation} \end{array}$$

This is the amount of member equity **ALLOCATED** to your capital credits account for 2024.

This is **NOT** the amount that will be **RETURNED** in 2024. Capital credit returns will be announced and paid to you in July in the form of a bill credit (or a check if no longer an active member.)

*Applies to residential rate only.

Allocation vs. Return of Capital Credits (member equity)

Allocation: The amount of WCE margins (profits) allocated to a member's capital credit account. This allocation is not an immediate payment to the member. *This process typically occurs each April.*

Return: Later, as financial conditions permit, the co-op board returns (pays) members a portion of what has been allocated to them in the past. *This process typically occurs each July.*

Safety and efficiency

We're here to help you \$ave

When summer heats up, our electric bills tend to increase as air conditioners are working overtime, driving up home energy consumption. As your local not-for-profit electric cooperative, West Central Electric is committed to helping you beat the heat without breaking the bank.

As the temperatures get hotter over the next few months, we want to make sure you know about a range of energy-saving offerings designed specifically with you in mind. By taking advantage of these programs and services, you can manage your summer energy consumption and costs.

Level-Payment Plan

When you sign up for our level payment plan, your energy bill is calculated by averaging your previous 12 months of use. With leveled billing, your monthly energy costs are easier to budget and manage, especially during seasonal fluctuations when bills tend to increase based on the weather. The level payment plan is a great option for anyone on a fixed income or those with highly variable seasonal needs.

Home Energy Audit

West Central Electric can assist members by sharing information on how to contract for an energy audit. An audit can identify areas where energy is wasted, and provide recommendations on ways to improve efficiency and lower your monthly bills. Energy audits may be done at varying levels of intensity, depending on the member's needs. The more intense audits will require a 50-50 cost share between the

member and cooperative with an incentive up to \$175. An additional weatherization rebate can be applied for based on the findings of the energy audit. This is also a 50-50 cost-share up to \$750.

Rebate Program

When you make upgrades or purchases to reduce home energy use, those smart decisions should be rewarded. WCE offers rebates on energy efficient appliances, heating and cooling equipment and more. Visit our website at <https://www.westcentralelectric.coop/energy-saving-rebates> to learn about our rebate program and how you can receive a rebate for installing energy-efficient equipment.

You Have the Power

Small actions combined can have a big impact on your summer energy bills.

The best way to lower energy use during summer months is to raise the thermostat to the highest setting that's comfortable. Ceiling fans can also help you feel cooler, but remember to turn them off when you leave the room. On warm summer nights, fire up the grill to keep additional heat out of the kitchen. Remember to change air filters often so your cooling system doesn't have to work harder than necessary.

Contact us to learn more about practical strategies to lower your use, trim your bills and make this summer a breeze for both you and your wallet.

Abby Berry writes on consumer and cooperative affairs for the National Rural Electric Cooperative Association.

STAY COOL. STAY EFFICIENT.

We're here to help you beat the summer heat. Take advantage of our efficiency programs and energy-saving recommendations designed to help you stay comfortable and cut costs all summer long.



West Central Electric
Cooperative, Inc.

A Touchstone Energy® Cooperative



From the WCE boardroom

Regular meeting of the Board of Directors held March 27, 2025

A meeting of the board of directors of West Central Electric Cooperative was held at the offices of the Cooperative, in Higginsville, Missouri, at 9:30 a.m. March 27, 2025, pursuant to the bylaws of the cooperative and previous resolution of the board of directors. The meeting was called to order by President Densil Allen Jr. Attorney Sheri Smiley caused the minutes of the meeting to be kept. The following directors were present: Allen Jr., Clark Bredehoeft, Richard Strobel, Dale Jarman, Robert Simmons, Stan Rhodes, Jeremy Ahmann, Colby Dowell and Elizabeth Houtsma. Also present was General Manager Michael Newland.

APPROVAL OF AGENDA

The agenda was approved as presented.

APPROVAL OF CONSENT AGENDA

The board approved its consent agenda consisting of the minutes of the regular meeting of Feb. 27, 2025; expenditures for the month of February 2025; new membership applications and membership terminations, and the Treasurer's Report.

FINANCING AND TREASURER'S REPORT

On behalf of CFO Rebecca Hoeflicker, Newland presented the February 2025 Operating Report (RUS Form 7) and Comparative Operating Statement. He reviewed the Financial and Statistical Report and Treasurer's Report with monthly and annual budget comparisons. He also gave the investment report. He presented and reviewed statistical data pertaining to operating revenue, expenses, margins, assets, liabilities, cash flow management, and KWH sales and ratios. He reported on interest rates and the impact of large loads and cold weather on the budget and projections for March margins. He gave updated budget numbers. The financial reports were accepted as presented.

APPROVAL OF STAFF REPORTS

The following staff reports were approved:

Operations Report

Operations Manager Scott Gard provided an oral report to supplement his written Operations Report. He reported on crews, and outages and causes for the month, including the impact of heavy winds during the month. He gave a mechanic and fleet report. He also gave a brush crew and right of way report and an update on the new digger truck was given. Crews were sent to help with tornados and high wind damage to West Plains, Missouri.

Safety and Engineering Report: Engineering Manager Pete Nelson provided an oral report to supplement his written Safety and Engineering Report. As of Feb. 28, 2025, employees have worked 849 days without a lost-time accident. Co-op employees drove a total of 28,716 miles as of the end of February without a serious accident. He reported on safety meetings, crew visits, and gave an engineering/staking department report. The Highway13 project was reported on.

Member Services Report: Newland gave the report for Member Services Manager Brent Schlotzhauer, who had provided his written Member Services Report. He provided updates on school presentations, business appreciations, and reported on the continuing education he attended. He gave a net metering report. Chamber meetings attended were reported on. He gave an update on the CRC Dispatch center and how calls from recent wind storms were handled.

DISCUSSION ON METER RESEARCH AND RECOMMENDATION

Newland and Nelson presented research done on meter options. They included a summary to the board of the aging meter system. Staff's recommendation is to not update old equipment that is outdated. Staff has studied different metering systems and software and staff recommendation was given. They rec-



ommend phasing the new metering system in over the next several years. The board voted to follow staff's recommendations on the new metering system.

DISCUSSION OF COST OF OVERHEAD AND UNDERGROUND NEW SERVICE

Newland provided information on the cost of overhead and underground new builds, including the current price per foot. It was tabled until next month.

REVIEW AND APPROVE CAPITAL CREDIT RETIREMENT

Newland provided different scenarios for capital credit retirement for 2025. Staff's recommended retirement is \$1,200,000 of the oldest credit and \$300,000 of 2024, which is an 80/20 split. The board accepted staff's recommendations.

POLICIES 3.10, 3.16 AND REVIEW AND APPROVE SECTION 3

Policy amendments to 3.10 and 3.16 came from the Policy Committee. The board voted to amend the policies per the committee's recommendations. Section 3 was tabled until next month.

NW REPORT

Simmons and Newland gave the NW Report. The annual meeting was discussed. They discussed margins, plant, the mobile generator and capital credits.

SCHOLARSHIP COMMITTEE REPORT

Jarman reported on the scholarship committee. He reported there were five students receiving funds from the John & Kathryn English Scholarship Trust, and 23 students receiving a WCE Scholarship for \$1,000.00 each.

NRECA ANNUAL MEETING REPORT

The board members who attended reported on the meeting.

DISCUSS BOARD SELF-ASSESSMENT REPORT

The board reviewed the self-assessment report.

LEGAL REPORT

Attorney Sheri Smiley gave the legal report for the month.

MANAGERS REPORT

Manager Michael Newland gave the Manager's Report. He reported he just completed employee reviews, discussed a retirement and staffing, and gave an update on the Lone Jack project.

UNFINISHED BUSINESS

None.

NEW BUSINESS

None.

EXECUTIVE SESSION

Executive Session was called at 12:02 p.m. and was out at 12:42 p.m.

ADJOURNMENT

Meeting adjourned.

FINANCIAL REPORT

February 2025 Statement of Operations

	This month	YTD 2025	YTD 2024
Revenue	\$4,372,226	\$8,811,979	\$6,943,420
Power Bill Expense	2,295,559	4,843,123	3,728,317
Operation & Maintenance Expense	752,864	1,477,576	1,213,579
Depreciation Expense	216,386	431,749	414,776
Interest Expense	131,009	275,781	255,770
Total cost of Service (Total Expenses)	3,395,818	7,028,229	5,612,442
Operating Margins (Revenue less Expenses)	976,408	1,783,750	1,330,978
Other Margins	25,667	47,229	41,097
TOTAL MARGINS	\$1,002,075	\$1,830,979	\$1,372,075